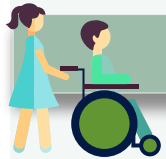


Types of Long Term Care Services

Long term care (LTC) refers to care that is required by people for an extended period of time because of medical, physical, and cognitive conditions caused by accident, illness or frailty. LTC involves receiving assistance or supervision to perform activities of daily living when these tasks can no longer be performed independently.



Home Health Care

In Home Care

Features:

- Homemaker Services
- Personal Care
- Nursing Services
 - RN
 - LPN
 - Health Care Aide
 - Personal Care Aide
- Therapy Services
 - Speech
 - Respiratory
 - Physical



Adult Day Care

Community Day Care Services

Features

- Part-Time Care in a Group Setting
- Social Interaction and Security



Hospice Care

End of Life Care for the Terminally Ill (6 months)

Features

- Inpatient Facility Care
- In-Home Care



Assisted Living Facility Adult Foster Home Residential Health Care

Apartment-Like Conditions

Features:

- Personal Care Assistance
- Non-Skilled Care Services



Nursing Facility Nursing Home

Institutional Care Facility (due to necessity)

Features:

- Skilled Care
- Intermediate Care
- Custodial Care

Contact **CBS Brokerage at 763.450.1870** for more information on beginning the LTC discussion with your clients.

These materials are provided for educational purposes only and do not constitute the solicitation of an insurance product to the public. For use with non-registered products only. Products and programs offered through CBS are issued by various insurance companies and may not be available in all states. Policy terms, conditions and limitations will apply. Not all applicants will qualify for coverage. You can obtain more information about insurance products by contacting your insurance agent. CBS makes no representation regarding the suitability of a particular insurance product to your needs. Please consult your individual tax or legal professional regarding your personal situation. 0816 SOLC16-6135-A 0818 Copyright 2019 CBS Brokerage Connections